

# Ethernet Services

## Why Connect

Your organization depends on reliable, stable, and fast connections for success. To assist your organization, Manitoba Hydro Telecom (MHT) utilizes fibre optic technology, and focuses on reliability, stability, speed, and capacity as the four pillars to service excellence. MHT specializes in combining fibre optic technology and the telecom services your organization needs.

Every customer requires a customized solution, and MHT is equipped to provide it. The following technical capabilities provide a summary of the resources MHT can provide.

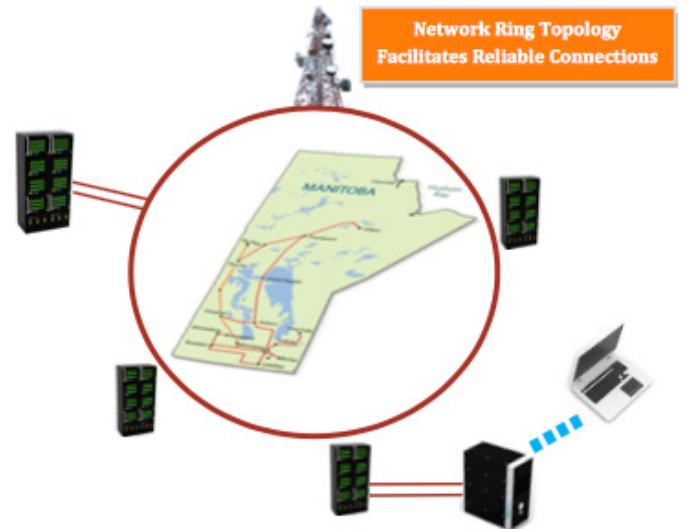
Contact us for a comprehensive analysis of how MHT can meet your Internet needs: [info@mht.mb.ca](mailto:info@mht.mb.ca)

## Speed

- Ethernet services ranging from 10 Mbps to 10 Gbps.
- Backbone Composition: Fibre.
- Available UNI PHYs & NNI PHYs: 10/100/1Gig/10Gig, SX, LX, ZX, SR, LR, etc.

## Technology

- Carrier Ethernet.
- TDM services as either DS1s or DS3s.
- CWDM, DWDM.
- Cisco Systems Hardware and Multi-service Transport Platform (MSTP) Equipment.
- Q-in-Q Available.



## Connections

- Connect multiple networks across NA.
- Point-to-point / Point-to-multipoint.
- Connect to the Manitoba Hydro tower network, which spans the majority of Manitoba.
- Scalable connections.

## Reliability

- 99.95% availability.
- 24/7/365 Network Operations Centre (NOC) Support.
- Competitive Service Level Agreements.
- Network Ring Topology.